



R2000 ASSEMBLY INSTRUCTIONS

To avoid possible damage to this Fitness Cycle,
please follow these assembly instructions.
Carefully remove all its parts from the box,
lay them out and review the parts list.

If any parts are missing, please call 1-800-335-4348, Ext 12

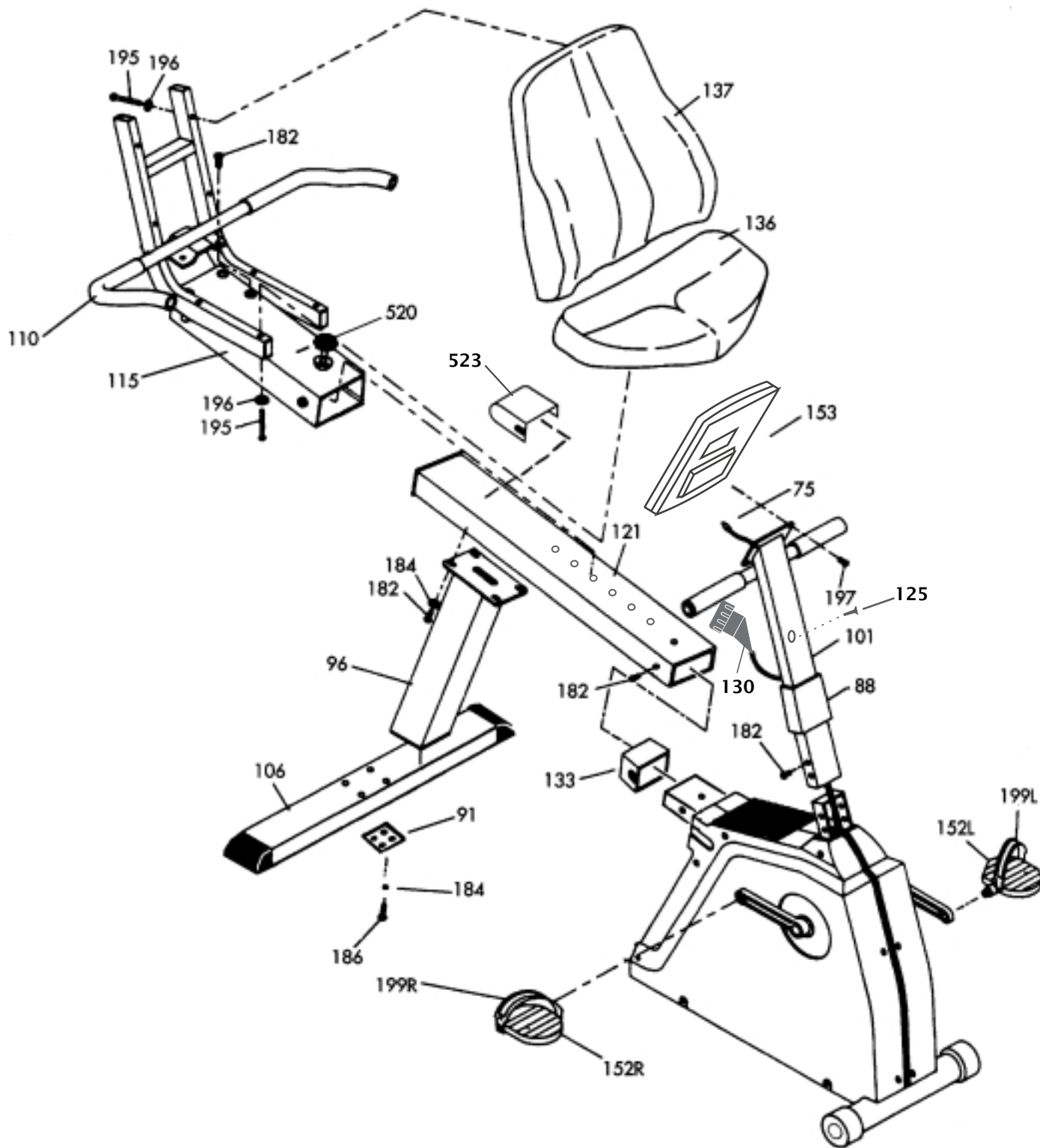
Before proceeding, find your Fitness Cycle's serial number,
located on the underside of main frame, and enter here:

Refer to this number when calling for service.



IT ALL STARTS WITH A VISION

R2000 Parts Diagram



R2000 Parts

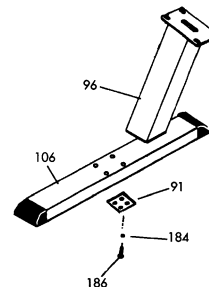
VISION FITNESS R2000 Parts Description

<u>Part #</u>	<u>Description</u>	<u>Count</u>	<u>Dimensions</u>
<i>Rear Foot and Seat Support Parts</i>			
#106	Rear Foot Assembly	1	
#182	Top Attachment Bolts	7	20mm L x 8mm D
#184	Top Attachment Washers	7	
#91	Bolt Plate	1	
#96	Seat Rail Support Post	1	
#186	Support Post Bolts-Bottom	4	60mm L x 8mm D
#121	Seat Rail	1	
<i>Seat Parts</i>			
#115	Seat Frame	1	
#137	Seat Cushion Back	1	
#136	Seat Cushion Bottom	1	
#195	Seat Cushion Bolts	8	55mm L x 6mm D
#196	Seat Cushion Bolt Washers	8	
#110	Seat Mount Handlebars	1	
#182	Handlebar Attachment Bolts	4	20mm L x 8mm D
#184	Handlebar Attachment Washers	4	
#133	Rubber Seat Rail Cap	1	
#520	Seat Knob	1	
#523	Seat Rail End Cap	1	
<i>Console Parts</i>			
#101	Console Mast	1	
#182	Console Mast Attachment Bolts	6	20mm L x 8mm D
#184	Console Mast Attachment Washers	6	
153	Console	1	
#75	RPM Sensor Wire	1	
#88	Console Mast Rubber Cover	1	
<i>Other Parts</i>			
#152	Pedals	2	
#199	Pedal Straps	2	
#130	Tension Knob and Cable	1	
#125	Tension Knob Bolt	1	

R2000 Assembly

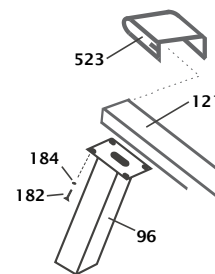
Step 1 • Seat Support and Rear Foot

- 1: Attach the Seat Rail Support Post (96) to the top of the Rear Foot Assembly (106) with four Bottom Support Post Bolts (186), four Washers (184) and Bolt Plate (91). Tighten with a 5mm allen wrench.



Step 2 • Seat Rail

- 1: Place the Seat Rail (121) on the Seat Rail Support (96). Thread the four Attachment Bolts (182) with Washers (184) through the top of the Seat Rail Support (96) into the Seat Rail (121).
- 2: Slide the Seat Frame (115) onto the Seat Rail (121) from the front of the Seat Rail. After the Seat Frame (115) is on the Seat Rail (121) insert the Seat Knob (520) into a hole to prevent the Seat Frame (115) from sliding forward.
- 3: Slip the Rubber Seat Rail Cap (133) onto the front end of the Seat Rail (121), slide the Rubber Seat Rail Cap (133) back to expose the three front attachment bolt holes.
- 4: Place the Seat Rail Assembly (121) into the main frame bracket. Thread the three Attachment Bolts (182) with Washers (184) through the Seat Rail (121) in the main frame bracket. Tighten all Attachment Bolts (182) securely to the main frame bracket. Slide down the Rubber Seat Rail Cap (133) until it is flush with the side covers.
- 5: Place the seat rail end cap over the rear end rail and snap to the top of the seat rail end post.



END CAP

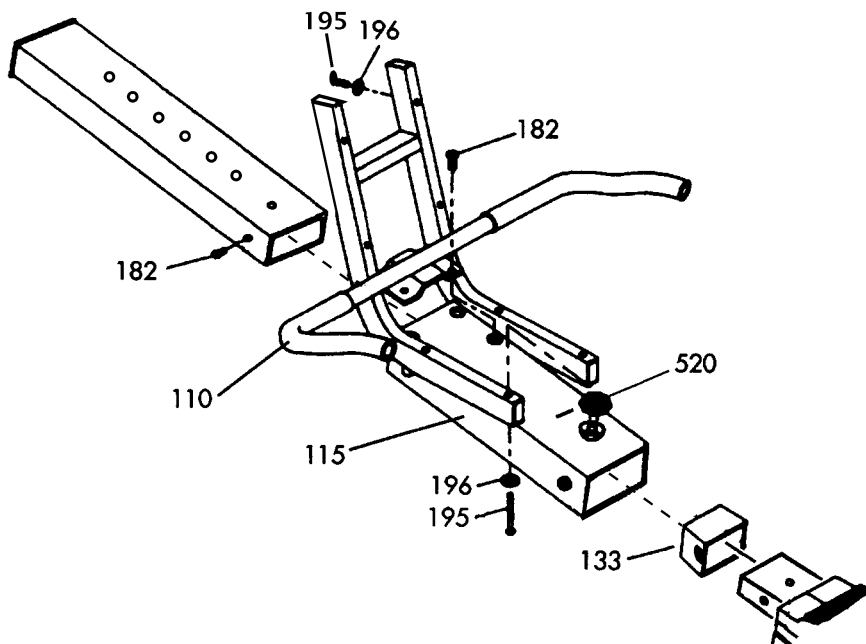
SIDE VIEW



FRONT VIEW



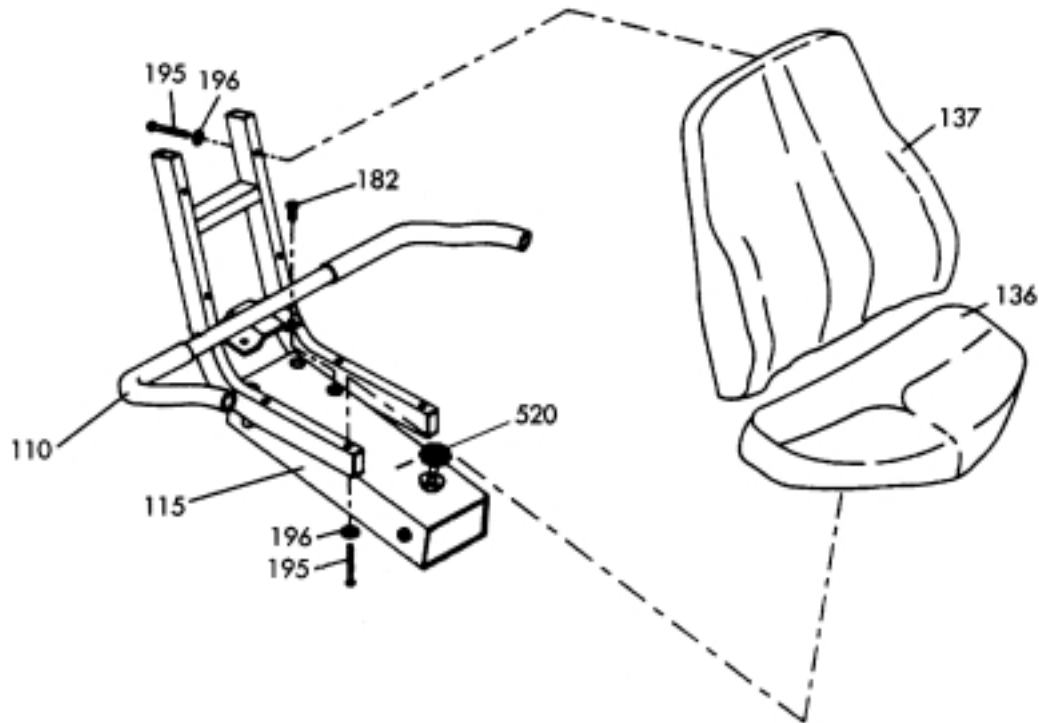
Note: ALWAYS HOLD THE SEAT KNOB OUT WHEN ADJUSTING THE SEAT HEIGHT. TURN THE INNER KNOB CLOCKWISE TO LOCK IN PLACE.



R2000 Assembly

Step 3 • Seat Assembly

- 1: Secure the Seat Mount Handlebars (110) to the Seat Frame (115) with four Seat Attachment Bolts (182) and Washers (184).
- 2: When mounting the Seat Cushion Bottom (136), you have two sets of holes to choose from. Using the rear set of holes is recommended for most people. For a smaller person, you may choose to use the forward set of bolt holes. Mount the Seat Cushion Bottom (136) to the Seat Frame (115) with four of the Seat Cushion Bolts (195) and Seat Cushion Bolt Washers (196). Do not fully tighten any bolt until all four bolts are started.
- 3: Mount the Seat Cushion Back (137) to the Seat Frame (115) using the remaining four Seat Cushion Bolts (195) and Washers (196). Do not fully tighten any bolt until all four bolts are started.

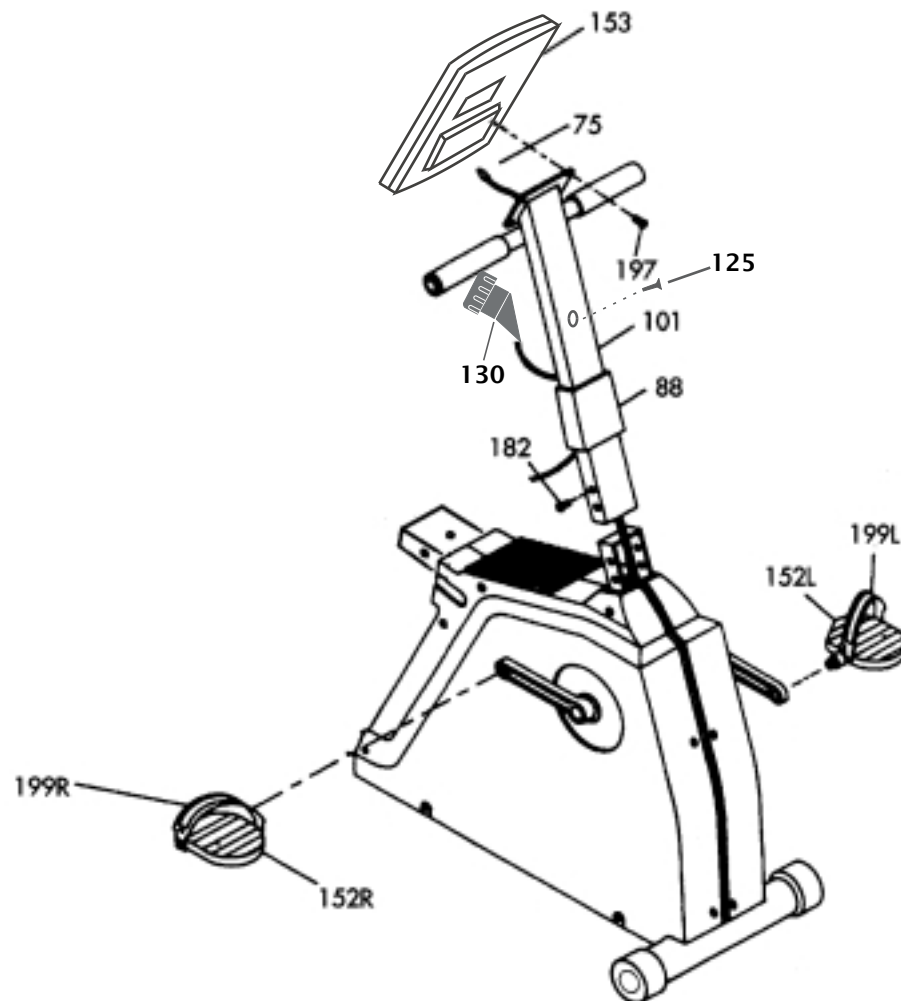


***R2000* Assembly**

Step 4 • Pedals

1: Identify the left and right Pedals (152) and the left and right Pedal Straps(199). Attach the correct straps to each pedal, then thread each Pedal into the correct left and right crank arms and tighten. The Pedals and Straps are marked with either an L or an R.

NOTE: IT IS VERY IMPORTANT TO FULLY TIGHTEN EACH PEDAL. FAILURE TO DO SO WILL RESULT IN LOOSENING AND NOISE. USE THE WRENCH PROVIDED OR A 15MM OPEN END WRENCH.



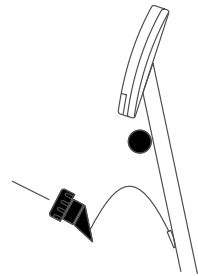
Step 5 • Console Mast

- 1: Unfold the RPM Sensor Wire (75) that is folded into the top frame bracket. Straighten this wire and remove any kinks by drawing the cable through your fingers.
- 2: Slip the Tension Knob cable (130) along with the RPM Sensor Wire (75) through the Rubber Console Mast Cover (88), then rest the Rubber Console Mast Cover over the top frame bracket.
- 3: Holding the Console Mast (101) above the top frame bracket, guide the RPM Sensor Wire (75) through the Console Mast while simultaneously sliding the Console Mast onto the top frame bracket.
- 4: Slide the Rubber Console Mast Cover (88) up to expose the bolt holes in the Console Mast (101), then bolt to the frame using six Attachment Bolts (182). Make sure all these bolts are tight. Now slide the Rubber Console Mast Cover (88) back down to cover the bolt heads.

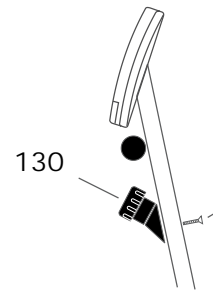
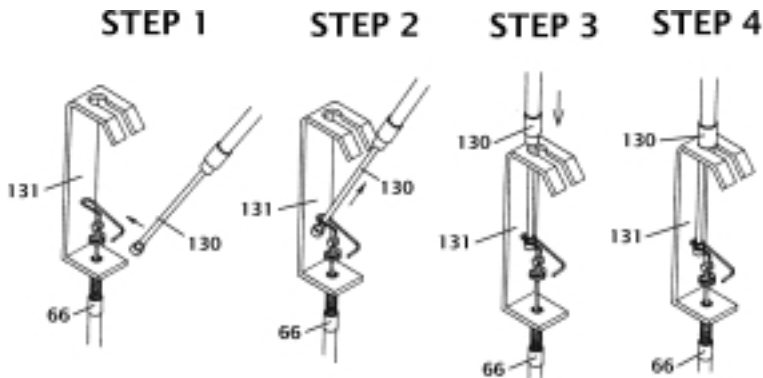
R2000 Final Assembly

Step 6 • Cable Connection

- 1: Locate the Tension Knob and upper cable assembly (130). Turn the Tension Knob to position 1. Reach inside the opening of the Console Mast (101) and connect the Upper Magnet Shift Cable (130) to the lower cable hook-slide on the end of the Lower Magnet Shift Cable (66), as shown in the accompanying illustrations.
- 2: Insert the cable through the slot and draw the tension cable with the copper end (130) into the metal bracket notch (131) and insert the cable.
- 3: Push the cable into the console mast (101). Insert the tension knob assembly to the console mast. Attach bolt (125) through the front of the console mast and tighten down the tension knob assembly.



NOTE: When the tension knob (130) is inserted into the console mast (101) the Upper Magnet Shift Cable (130) must be placed in the top of the console mast (101), between the tension knob (130) and the console (153).

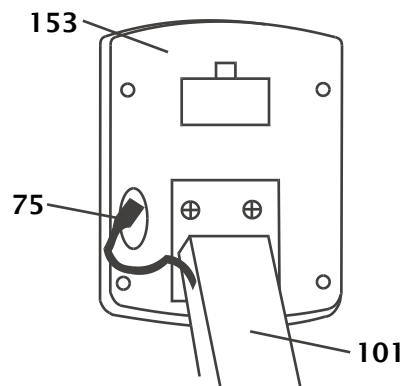


Step 7 • Console

- 1: Plug the RPM Sensor Wire (75) into the Console (153). DO NOT PINCH the RPM Sensor Wire between the Console (153) and the Console Mast (101). Make sure the Sensor Wire fits in the slot cut in the Console Mast Mount.
- 2: Mount the Console (153) to the Console Mast (101) using the two Console Attachment Bolts found in the back of the Console.

Step 8 • Install Batteries and Test Operation

- 1: Remove the battery compartment lid on the back of the Console (153) and install the Batteries. Two AA Batteries are required.
- 2: Test ride the bike and make sure that all console feedback functions are operational.





621-D East Lake Street
P.O. Box 280
Lake Mills, WI 53551
(920) 648-4090